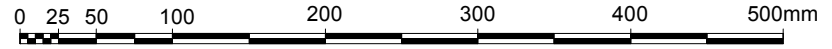
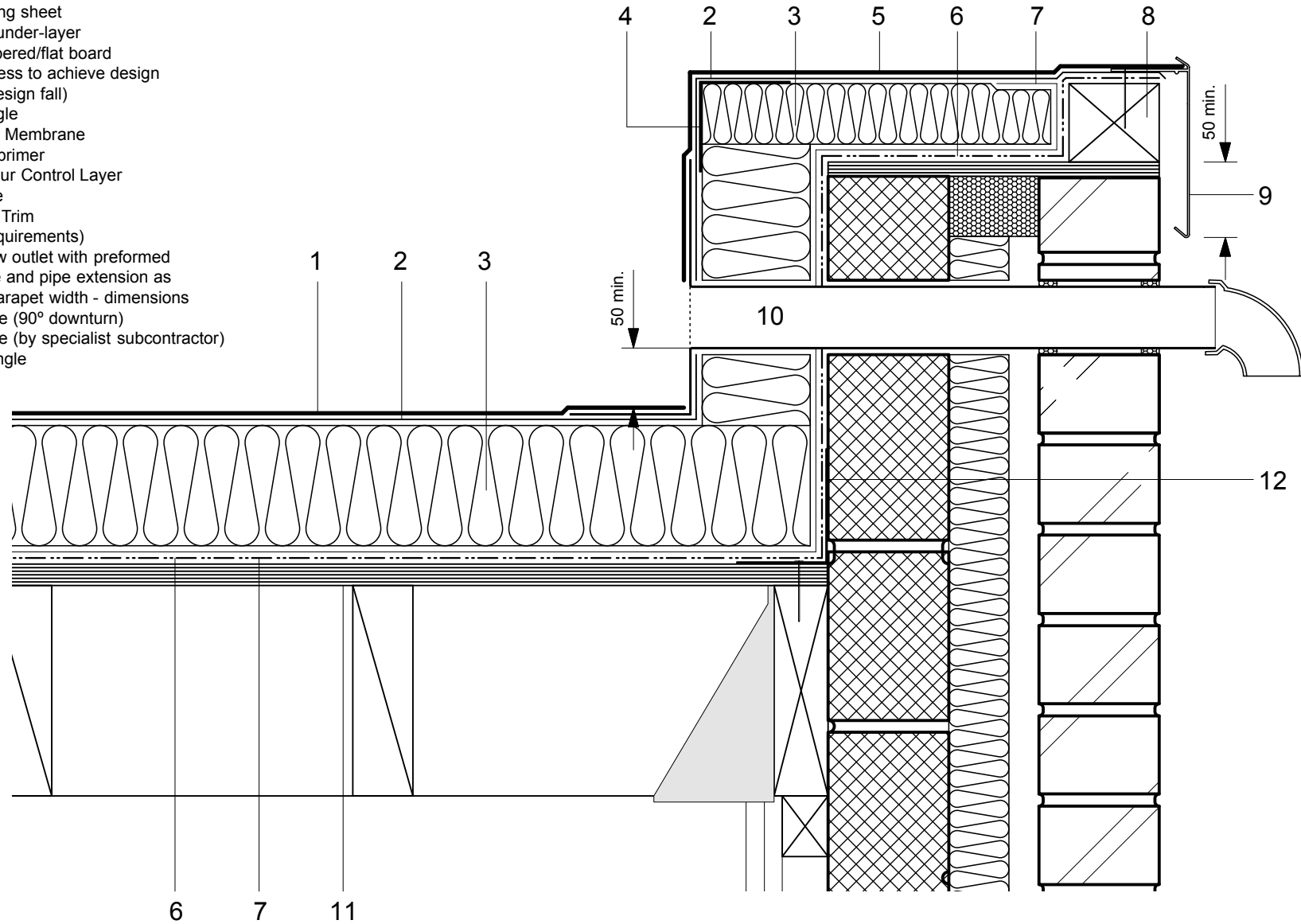


- 1 Excel HRS capping sheet
- 2 Hyranger SPOT under-layer
- 3 Hytherm ADH tapered/flat board
- Insulation (thickness to achieve design U-value and/or design fall)
- 4 Metal support angle
- 5 Excel HRS Detail Membrane
- 6 Vernis Antac ST primer
- 7 VAP AL SK Vapour Control Layer
- 8 Timber hard edge
- 9 Axtrim Perimeter Trim (to suit design requirements)
- 10 Axter RO overflow outlet with preformed membrane flange and pipe extension as required to suit parapet width - dimensions to be taken on site (90° downturn)
- 11 Plywood substrate (by specialist subcontractor)
- 12 Metal retaining angle



Do Not Scale. All dimensions to be checked on site by the Axtershield Installer

Axter provides detail drawings as part of our technical design service. Such drawings should only be used as a guide during the design process and should not be utilised during construction. Axter accepts no liability for misuse of this service.

PROJECT	AXTER - STANDARD DETAIL
DRAWING NUMBER	WR.P.EX.081

DRAWING	AXTER WARM ROOF - EXCEL/SPOT SYSTEM TYPICAL PARAPET RAIN WATER OVERFLOW DETAIL - PLYWOOD SUBSTRATE	
SCALE	1:5 @ A4	DATE
		2014

AXTER LTD
West Road, Ransomes
Europark, Ipswich,
Suffolk, IP3 9SX.
Tel: (01473) 724056
Fax: (01473) 723263
info@axterltd.co.uk

