

Axtrim GRP roofing accessories

INTRODUCTION

Axtrim is a simple-to-install, maintenance free edge trim and parapet wall flashing system for most built-up and mastic asphalt flat roof applications. Manufactured from glass reinforced polyester, with a low coefficient of thermal expansion, Axtrim has a higher strength to weight ratio than its metal counterparts. This eliminates the problem of roof membranes tearing at the trim joints. Axtrim is also corrosion resistant.

Supplied in 3m lengths for easy cutting on site, Axtrim is available in a choice of profiles (depending on the application) and 3 colours, to provide a neat, unobtrusive finish to the roof edge.

BENEFITS

- Simple to handle, work and install
- High strength to weight ratio
- Corrosion resistant
- Negligible coefficient of expansion
- Competitively priced
- Available in a choice of 5 profiles and 3 colourfast finishes
- Maintenance free
- Neat, unobtrusive appearance
- Pre-formed internal/external corners are available to complement AXTRIM

DESCRIPTION

Composition and manufacture

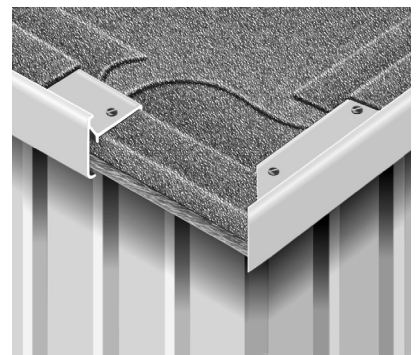
Made from pultruded glass-fibre reinforced polyester resin.

Appearance

Available ex-stock in 3 colours: white, grey and black. Other colours are available to special order, depending on quantity.

PERFORMANCE

Due to AXTRIM's GRP composition it has a negligible coefficient of thermal expansion, will not corrode, rust or dent and is not affected by atmospheric pollution. The profiles are colourfast and once installed, are maintenance free.



Axtrim in use



Axter GRP Drip Trim with 50mm face (DT50) for use with bituminous membrane systems

SITWORK

Cutting

All drilling and cutting, e.g. mitring of corners, can be carried out on site using traditional tools.

General jointing and fixing

Axtrim should be fixed at maximum 300mm centres into timber grounds or suitable plug inserts, using woodscrews. In the case of fixing to metal decks, self-tapping screws should be used. All lengths should be close butt jointed, using connecting pieces.

SUPPLY

Delivery

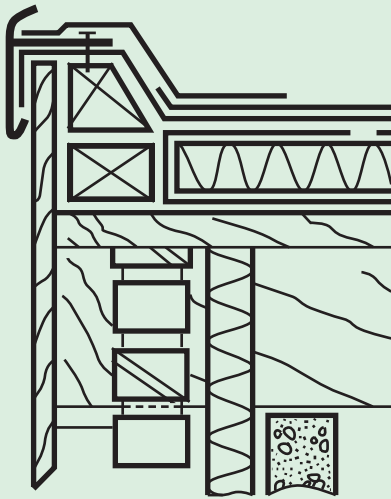
Axtrim is supplied in 3m lengths. Corner connecting pieces are also available with the system.

Availability

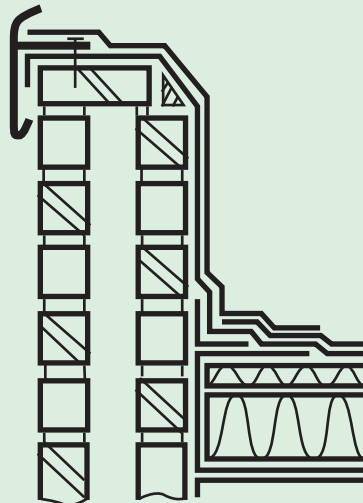
Axtrim is available from the address overleaf.

TYPICAL DETAILS

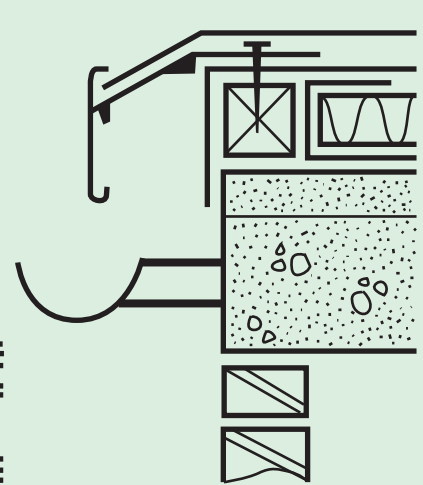
AXTRIM – Water Check



AXTRIM - Parapet



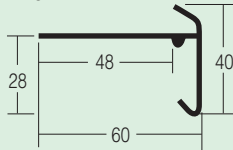
AXTRIM - Drip Trim (DT 50)



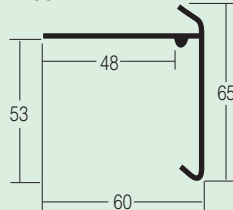
PROFILE DETAILS

EDGE TRIM Pre-formed internal and external angles are available. All profiles below available with extended fixing arm.

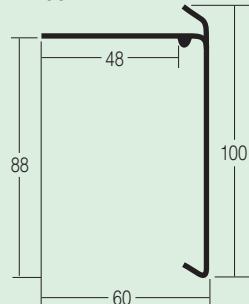
A20



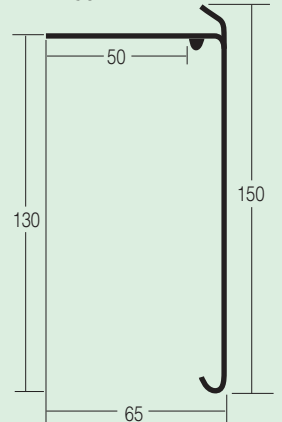
A50



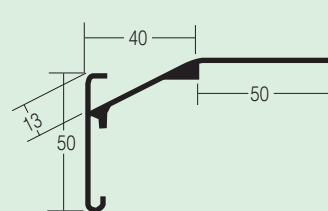
A100



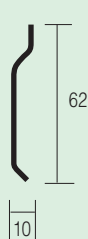
A150



DRIP TRIM



A60



PARAPET WALL FLASHING
(TERMINATION BAR)